



Instr. No. 2650-130H

Installation Instructions for PRO-COMP™ Model 3240 PRO-LITE™

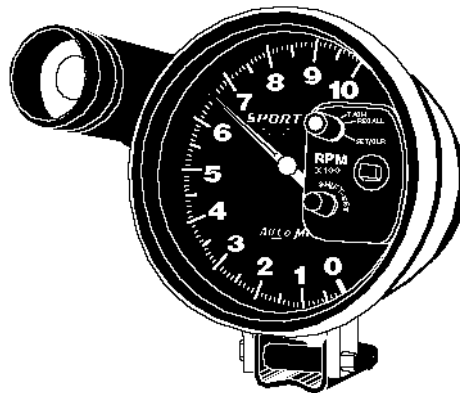
Professional Warning Light Pressure & Temperature



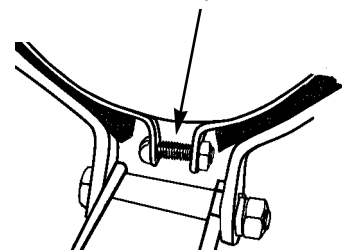
Congratulations on your purchase of the Auto Meter Pro-Lite. This sophisticated sensing unit detects even the slightest changes in pressure or temperature for oil, water and fuel. Emitting a high-intensity warning light, Pro-Lite gives you time to respond before serious engine damage occurs. Please read the following instructions carefully before installing your new Pro-Lite.

Mounting

The Pro-Lite may be mounted on the dash, on the steering column, or in other locations for optimum visibility. To mount the Pro-Lite on an Auto Meter Competition tachometer, remove the outer shock strap and loosen the bolt on the inner strap. Insert the base of the Pro-Lite under the inner strap and retighten the bolt. Reassemble the outer shock strap to the base making sure there is clearance around the inner bolt. See illustration at right.



IMPORTANT
For proper operation of shock mount inner bolt must not touch outer strap or base.



Model Selection

The Pro-Lite requires one of the senders listed below for proper operation. Select the sender with the appropriate pressure or temperature warning point for your application. Pro-Lite and Lens Kit information is also given.

MODEL	ITEM	WARNING POINT	INCLUDES
3240	PRO-LITE	—	Red lens, red night cover
3241	PRESSURE SENDER	15PSI	—
3242	PRESSURE SENDER	30PSI	—
3243	PRESSURE SENDER	50PSI	—
3246	TEMPERATURE SENDER	200°F	—
3247	TEMPERATURE SENDER	220°F	—
3248	TEMPERATURE SENDER	275°F	—
3250	LENS KIT	—	Blue lens, blue night cover
3251	LENS KIT	—	Yellow lens, Yellow night cover
3252	LENS KIT	—	Red lens, Red night cover

NOTE: SENDER LIGHTS WITHIN A 5% RANGE OF NUMBER SHOWN.

Additional Information

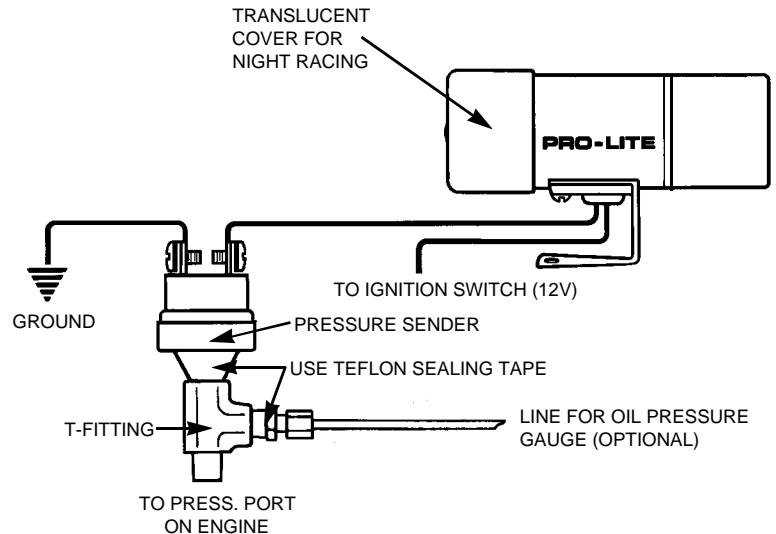
Night Racing: The Pro-Lite is designed for high brilliance during daylight racing and may be too bright for night racing. The translucent cover supplied with the Pro-lite should be used over the lens during night racing to reduce brightness.

Bulb Replacement: Remove three screws on light. The bulb located in the rear section is easily removed by twisting it to the left. Replace with No. 1076 or 1142 automotive bulb.

Lens Change: Remove three screws on light. Remove snap ring, change lens and replace snap ring. Tap snap ring against lens for tightness.

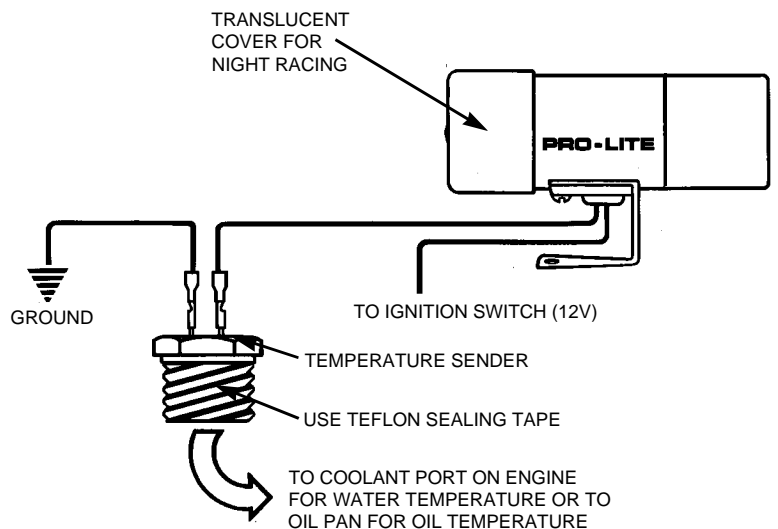
INSTALLATION FOR PRESSURE PRO-LITE

1. Thread the Pressure Sender into the Pressure Port on the engine. A T-Fitting should be used if an oil pressure or fuel pressure gauge is used along with the Pro-Lite. (If an oil pressure or fuel pressure gauge is not being used, disregard the T-Fitting and thread the Sender directly into the Pressure Port on the engine.) Use thread sealing compound on sender threads.
2. Connect one wire from the Pro-Lite to the Ignition Switch (12V). Connect the other wire to either terminal on the Sender, as shown in diagram. Connect ground wire from the other Sender terminal to a good engine ground. **Note:** Do not connect Pro-Lite to a 12 volt circuit that allows it to remain on while engine is off. Plastic lens will melt if Pro-Lite is left on for an extended period of time.
3. Recheck installation. The Pro-Lite will come on when the Ignition Switch is turned on. It will go off as pressure increases.



INSTALLATION FOR TEMPERATURE PRO-LITE

1. Thread the Temperature Sender into the Coolant Port on the engine for water temperature, or into the Oil Pan for oil temperature. Use thread sealing compound on sender threads.
2. Connect one wire from the Pro-Lite to the Ignition Switch (12V), and the other wire to either terminal on the Sender, as shown in the diagram at right. Connect the ground wire from the other Sender terminal to a good engine ground. **Note:** Do not connect Pro-Lite to a 12V volt circuit that allows it to remain on while engine is off. Plastic lens will melt if Pro-Lite is left on for an extended period of time.
3. Recheck installation. Start the engine and make sure the Temperature Sender does not leak around the threads.



IMPORTANT: Some late model vehicles use electric sensors in their pressure and temperature senders for engine control functions. Before removing the original sender, we recommend that you contact your automotive dealer to be sure no critical functions will be disrupted.

SERVICE

For service send your product to Auto Meter in a well packed shipping carton. Please include a note explaining what the problem is along with your phone number. Please specify when you need the product back. If you need it back immediately mark the outside of the box "RUSH REPAIR," and Auto Meter will service product within two days after receiving it. (\$10.00 charge will be added to the cost of "RUSH REPAIR.") If you are sending product back for Warranty adjustment, you must include a copy (or original) of your sales receipt from the place of purchase.

12 MONTH LIMITED WARRANTY

Auto Meter Products, Inc. warrants to the consumer that all Auto Meter High Performance products will be free from defects in material and workmanship for a period of twelve (12) months from date of the original purchase. Products that fail within this 12 month warranty period will be repaired or replaced at Auto Meter's option to the consumer, when it is determined by Auto Meter Products, Inc. that the product failed due to defects in material or workmanship. This warranty is limited to the repair or replacement of parts in the Auto Meter instruments. In no event shall this warranty exceed the original purchase price of the Auto Meter instruments nor shall Auto Meter Products, Inc. be responsible for special, incidental or consequential damages or costs incurred due to the failure of this product. Warranty claims to Auto Meter must be transportation prepaid and accompanied with dated proof of purchase. This warranty applies only to the original purchaser of product and is non-transferable. All implied warranties shall be limited in duration to the said 12 month warranty period. Breaking the instrument seal, improper use or installation, accident, water damage, abuse, unauthorized repairs or alterations voids this warranty. Auto Meter Products, Inc. disclaims any liability for consequential damages due to breach of any written or implied warranty on all products manufactured by Auto Meter.

FOR SERVICE SEND TO: AUTO METER PRODUCTS, INC. 413 W. Elm St., Sycamore, IL 60178 USA (815) 895-8141