



Instr. No. 2650-192R

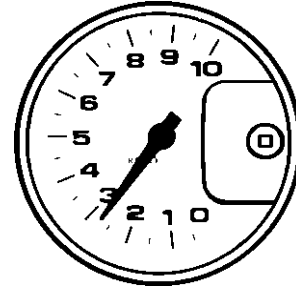
# INSTALLATION INSTRUCTIONS 3<sup>3</sup>/<sub>4</sub> OR 5" TACHOMETER MODEL 5610, 5620, 5795, 6809, 6811



## Important Notes

The procedures and connections described in these instructions must be followed precisely so the tach will function properly and the warranty be valid.

The pointer on your tach may not always rest at zero when the tach 12-Volt power is off. **This is normal.** When the engine is started, the pointer will register the correct RPM.



## Engine Cylinder

This tachometer is factory calibrated to operate on 8 cylinder engines. For 6 or 4 cylinder engines, it is necessary for you to make the proper adjustments.

### 8 Cylinder

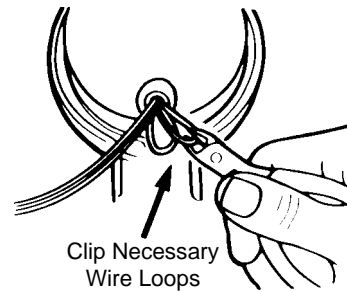
No adjustment necessary.

### 6 Cylinder

Clip **BROWN** wire loop only. Insulate with electrical tape.

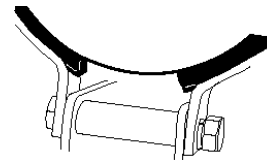
### 4 Cylinder

Clip **ORANGE** and **BROWN** wire loops. Insulate with electrical tape.



## Mounting

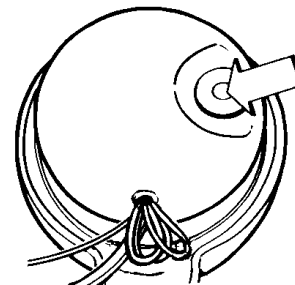
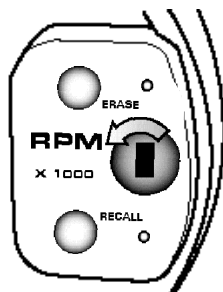
The special design of the tachometer base allows for a variety of mounting possibilities. Attach the base using screws provided or use a pop rivet tool.



## Light Replacement

Rotate twist-lock socket counter clockwise and remove. Replace the old bulb with Auto Meter No. 3218 or GE86 bulb. For complete socket and bulb assembly, use Auto Meter No. 3219

Remove snap plug and replace old bulb with Auto Meter No. 3206 or GE194 bulb.



## Lens Cleaning:

The clear plastic lens on your tachometer is made with a scratch resistant coating. To prevent scratching the lens when cleaning, use a mild, soapy solution to clean. Wipe lightly with a soft cloth.



---

## Optional Tachometer Cover:

Now that you have purchased your new tachometer, protect your investment from corrosive dirt and moisture. This attractive cover is constructed of durable nylon. A handy drawstring easily secures to the tachometer.

*For more information contact Auto Meter or see your local distributor.*



Model 5241

---

## Installation Tips

1. Mount tach base firmly to reduce vibration, wear and tear.
2. Avoid contact of the tach with windshield or other objects to maintain rubber shock absorbing feature.
3. A 12 V power source **MUST** be used to power this tachometer. A 12V motorcycle battery is a good alternative for cars without batteries. A battery with minimum 5 amp hour rating is recommended.
4. Avoid connecting tach power and ignition power leads together. Use separate battery leads for ignition and tach to avoid excess voltage drop.
5. Wherever possible, solder wire connections and avoid crimp-type connectors. This will minimize loose connections that could cause problems later.
6. Make sure you have a good ground to engine and battery negative terminal.
7. Wire installations should be neat and tied down to prevent tugging and fraying of wires at connections.

## Trouble Shooting

If your tach does not function properly after installation check the following:

1. Are all electrical connections correct and tight?
2. If neither tach nor dial light work, check ground and 12V power connections.
3. Is the Inductive Trigger installed correctly? (On Super Mag & Vertex OXC models only)
4. Disregard tach readings that occur before engine is started. The Inductive Trigger is so sensitive, it picks up surrounding static until magneto is operative.
5. If problems persist try tach on another vehicle with the same ignition.
6. For changes in ignition type, contact a service representative from Auto Meter.
7. Ignition manufacturers recommend that the ignition and coil be matched according to criteria which they establish (often that the ignition and coil be products of the same company). If they are mismatched, minor malfunctions may occur, showing as erratic readings on the tach. Mismatching coil and ignition types is often the cause of incorrect tach performance.

---

**NOTE:** This tachometer operates on standard, factory electronic and high performance electronic racing ignitions, such as Hy Fire and MSD. (This tachometer is **NOT** recommended for use on Accel BEI or Laser I & II ignitions. These ignitions require model 5215 adapter.)

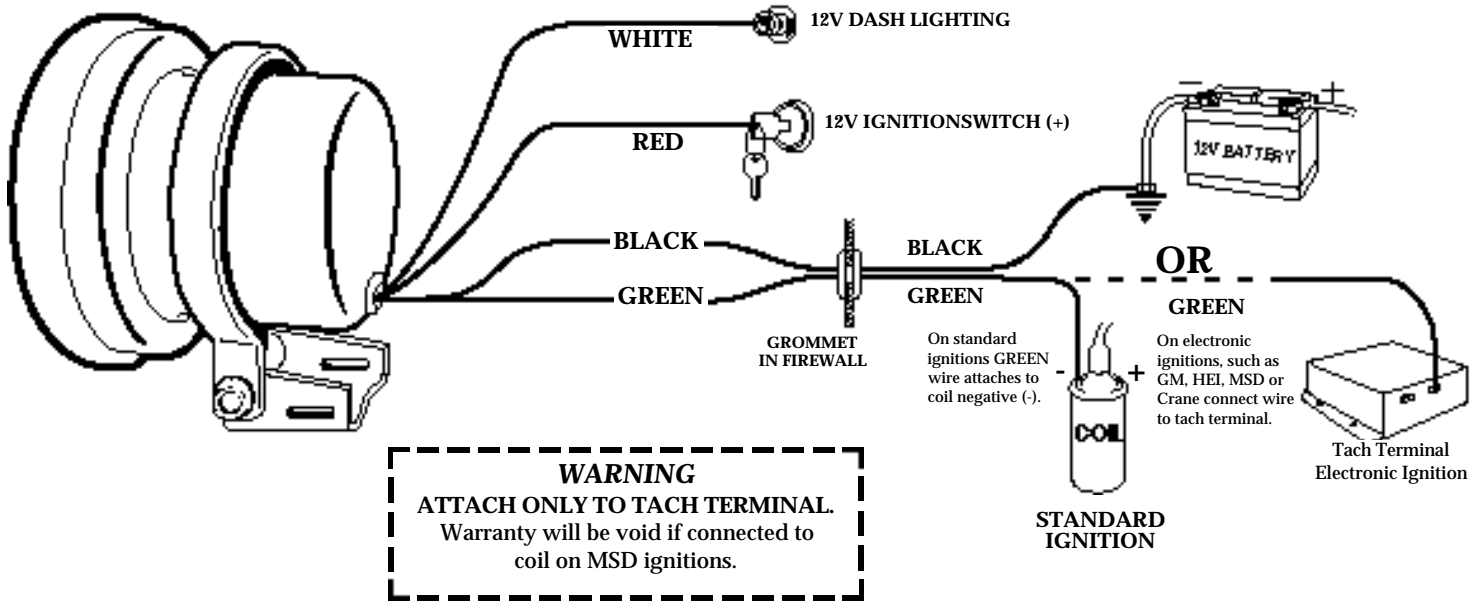
# Standard/Electronic Ignitions

(Accel BEI & Laser Ignitions require Model 5215 adapter.)

(Models 5610, 5795, 6809, 6811 only)

Connect the tachometer wires as shown below. All wires passing through firewall should be routed through the rubber grommet provided. If splice connector is used be sure to make the connection inside the car's driving compartment.

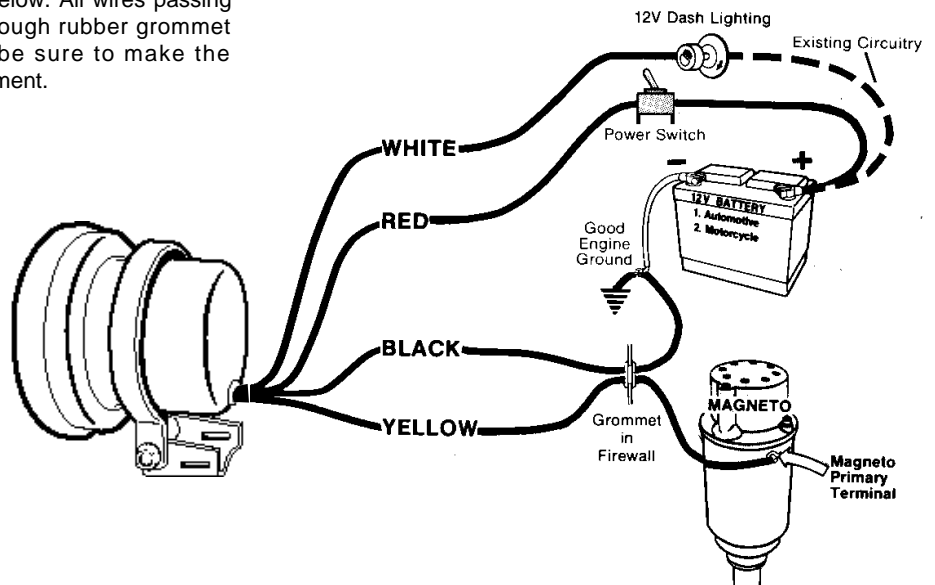
## Wiring



# Vertex Magneto Ignitions

(Model 5620)

Connect the tachometer wires as shown below. All wires passing through the firewall should be routed through rubber grommet provided. If splice connector is used be sure to make the connection inside the car's driving compartment.



# Memory Function

## Models 5795, 6809, 6811

This Memory tachometer records the highest RPM reached during each race. The memory controls are located directly on the tach face and are operated as shown below.

### Erase Memory

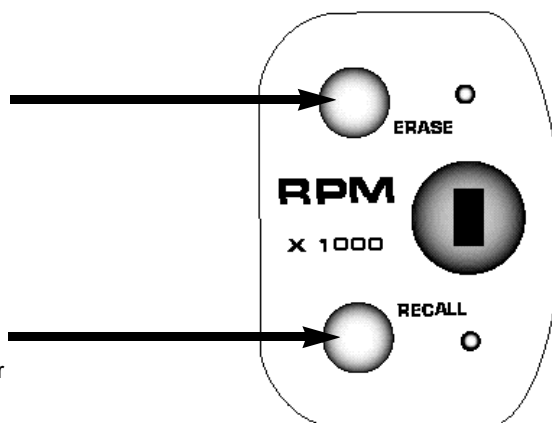
**Press "ERASE" Button Before Each Race**

This clears the Memory from previous run. You are now ready to record.

### Recall RPM

**Press "RECALL" to Display Highest RPM Reached**

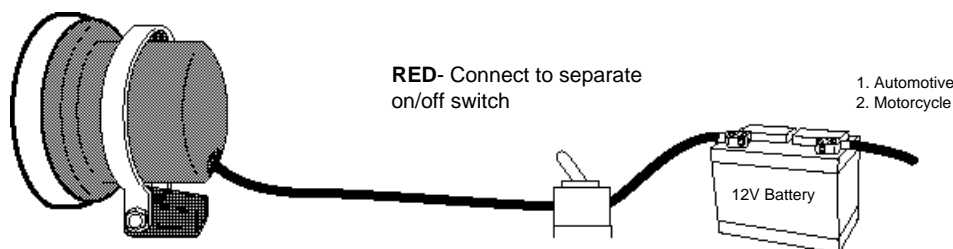
This can be done during or after a race. To clear for next race return to Erase Memory, above.



## Powering Your Tachometer

-The memory within the tachometer will retain the peak RPM data for one hour or more without power applied to the tachometer.

-12 Volt power must be supplied to the tachometer to maintain the memory function for long periods. It may be desirable to power the tach from your battery with a tach on/off switch separate from the ignition switch.



## SERVICE

For service send your product to Auto Meter in a well packed shipping carton. Please include a note explaining what the problem is along with your phone number. Please specify when you need the product back. If you need it back immediately mark the outside of the box "RUSH REPAIR," and Auto Meter will service product within two days after receiving it. (\$10.00 charge will be added to the cost of "RUSH REPAIR.") If you are sending product back for Warranty adjustment, you must include a copy (or original) of your sales receipt from the place of purchase.

## 12 MONTH LIMITED WARRANTY

Auto Meter Products, Inc. warrants to the consumer that all Auto Meter High Performance products will be free from defects in material and workmanship for a period of twelve (12) months from date of the original purchase. Products that fail within this 12 month warranty period will be repaired or replaced at Auto Meter's option to the consumer, when it is determined by Auto Meter Products, Inc. that the product failed due to defects in material or workmanship. This warranty is limited to the repair or replacement of parts in the Auto Meter instruments. In no event shall this warranty exceed the original purchase price of the Auto Meter instruments nor shall Auto Meter Products, Inc. be responsible for special, incidental or consequential damages or costs incurred due to the failure of this product. Warranty claims to Auto Meter must be transportation prepaid and accompanied with dated proof of purchase. This warranty applies only to the original purchaser of product and is non-transferable. All implied warranties shall be limited in duration to the said 12 month warranty period. Breaking the instrument seal, improper use or installation, accident, water damage, abuse, unauthorized repairs or alterations voids this warranty. Auto Meter Products, Inc. disclaims any liability for consequential damages due to breach of any written or implied warranty on all products manufactured by Auto Meter.

**FOR SERVICE SEND TO: AUTO METER PRODUCTS, INC. 413 W. Elm St., Sycamore, IL 60178 USA (815) 895-8141**  
Email us at [service@autometer.com](mailto:service@autometer.com)