



Instr. No. 2650-435C

## INSTALLATION INSTRUCTIONS

# SPORT-COMP JUNIOR TACHOMETER

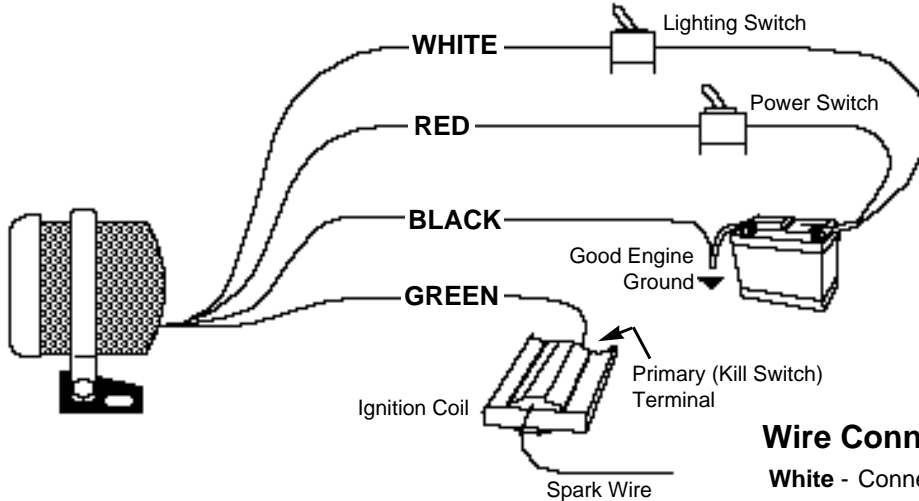
MODELS 6650, 6651 & 6652

### IMPORTANT

#### Read These Instructions

The procedures and connections described in these instructions **must** be followed precisely so the tach will function properly and the warranty will be valid.

This tachometer is made to operate on Briggs & Stratton engines only.



**WARNING :** No wire on this tach should be connected to the ignition secondary (Spark wire) at any time. This will cause damage to the product.

## Installation Instructions

1. Mount tach base firmly to reduce vibration, wear and tear.
2. Avoid contact of the tach with other objects to maintain rubber shock absorbing feature.
3. Avoid routing tach wires near spark wire to prevent possible shorting.
4. Solder all connections and avoid crimp-type connectors if possible. This will minimize loose connections that could cause problems.
5. Wire installations should be neat and tied down to prevent tugging or fraying of wires at connections.

## Wire Connections

**White** - Connect to 12 volt source for dial lamp operation.

**Red** - Connect to 12 volt positive.

**Black** - Must be common grounded with both battery and engine.

**Green** - Trigger lead, connect to the primary spade terminal on the ignition coil. If a kill switch is already connected there, you may connect to the high (hot) side of the kill switch.

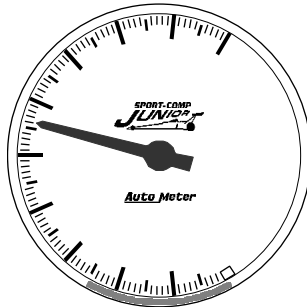
## Trouble Shooting

If your tach does not function properly after installation check the following:

1. Are all wires tightly connected to the proper terminals.
2. If neither tach nor dial light work, check ground and 12 volt power connections
3. Your tach is designed for Briggs & Stratton ignition coils only. Check to make sure that your ignition coil is manufactured by Briggs & Stratton.

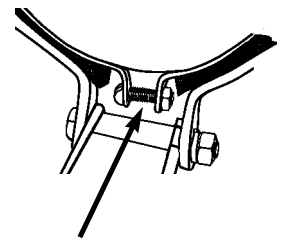
## Important Note:

The pointer on your tachometer may not always rest at zero when the 12V power is off. **This is normal.** When the engine is started, the pointer will register the correct RPM.



## Mounting

The special design of the tachometer base allows for a variety of mounting possibilities. Attach the base using screws provided or use pop rivet tool.



For proper operation of shock mount, inner bolt must not touch outer strap or base.

## SERVICE

For service send your product to Auto Meter in a well packed shipping carton. Please include a note explaining what the problem is along with your phone number. Please specify when you need the product back. If you need it back immediately mark the outside of the box "RUSH REPAIR," and Auto Meter will service product within two days after receiving it. (\$5.00 charge will be added to the cost of "RUSH REPAIR.") If you are sending product back for Warranty adjustment, you must include a copy (or original) of your sales receipt from the place of purchase.

## 12 MONTH LIMITED WARRANTY

The manufacturer warrants to the consumer that this product will be free from defects in materials and workmanship for a period of twelve (12) months from the date of the original purchase. Products that fail within this 12 month warranty period will be repaired or replaced at the manufacturer's option to the consumer, when determined by the manufacturer that the product failed because of defects in material or workmanship. This warranty is limited to the repair or replacement of parts in the instrument and the necessary labor done by the manufacturer to affect the repair or replacement of the instrument. In no event shall this warranty exceed the original purchase price of the instrument, nor shall the manufacturer be responsible for special, incidental or consequential damages or costs incurred due to failure of this product. Warranty claims to the manufacturer must be transportation prepaid and accompanied with dated proof of purchase. This warranty applies only to the original purchaser of product and is non-transferable. All implied warranties shall be limited in duration to the said 12 month warranty period. Breaking the meter seal, improper use or installation, accident, water damage, abuse, unauthorized repairs or alterations voids this warranty. The manufacturer disclaims any liability for consequential damages due to breach of any written or implied warranty on all products made by the manufacturer.