

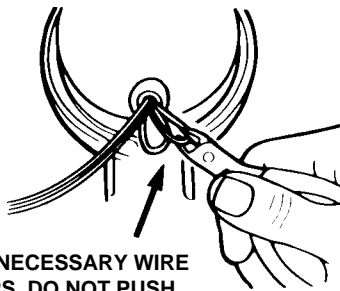


For use on standard and most electronic ignitions. **NOT Valid for Race Contingency.**

### Calibration

#### IMPORTANT

This tachometer is factory calibrated to operate on 8 cylinder engines. For 4 or 6 cylinder engines, it is necessary to make the proper adjustments to adapt this tachometer to your cylinder range. Simply clip the necessary wire loops as shown. Insulate wires with electrical tape to prevent electrical shorts.



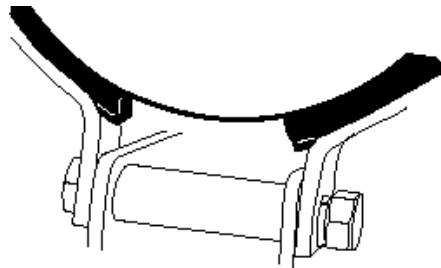
CLIP NECESSARY WIRE LOOPS. DO NOT PUSH WIRES INTO CASE.

**NOTE:** This tachometer has an air core meter. The tach pointer may not always rest at zero. This is normal. When engine is started, pointer will position on the correct rpm.

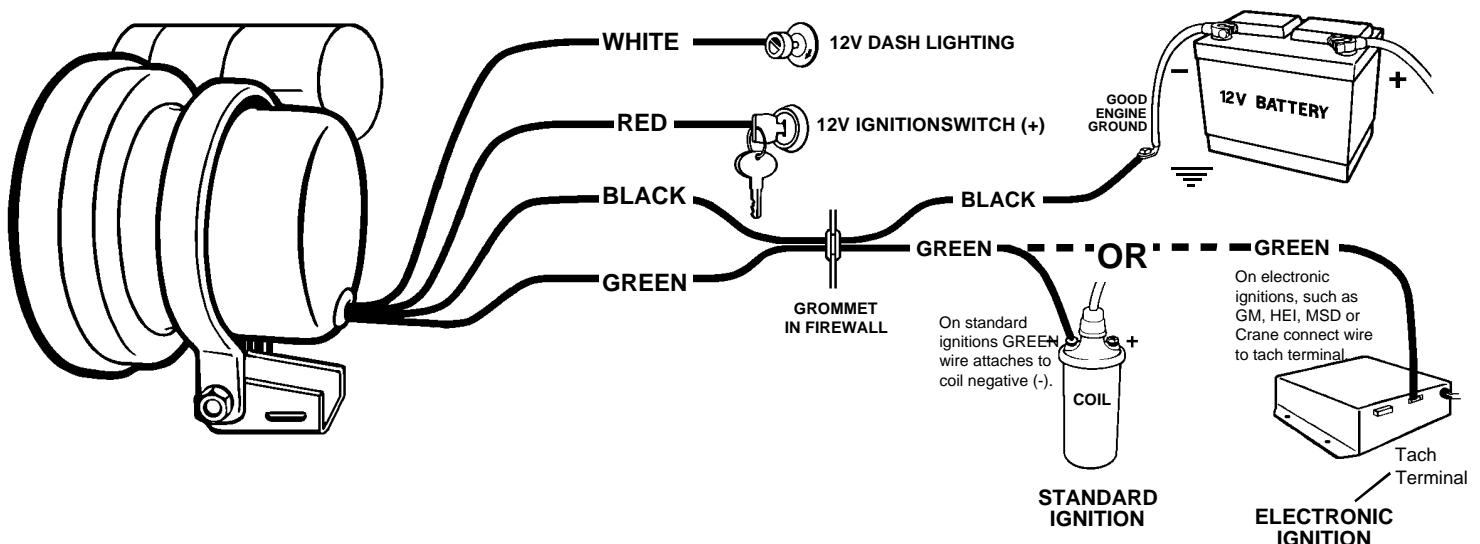
- 8 CYL.**—NO adjustment is necessary.
- 6 CYL.**—Clip BROWN wire loop only. Insulate with electrical tape.
- 4 CYL.**—Clip BROWN and ORANGE wire loops. Insulate with electrical tape.

### Mounting

The special design of the tachometer base allows for a variety of mounting possibilities. Attach the base using screws provided or use pop rivet tool.



### Wiring



**WARNING**  
Warranty will be void if connected to coil on MSD ignitions. Attach only to tach terminal.

**NOTE:** This tachometer operates on standard, factory electronic and high performance electronic racing ignitions, such as Hy Fire and MSD. (This tachometer is NOT recommended for use on Accel BEI or Laser I & II ignitions. These ignitions require model 5215 adaptor.)

# Shift-Point Selection



# TACHOMETER

1. Determine your engine's shift point for maximum horsepower (for example, 5400 rpm).
2. Turn on the power to the tach by turning the key on (Do Not start the engine). Set the desired RPM by turning the adjust knob on the tach; the pointer will move. Stop when it reaches the desired shift point.
3. Turn the power off. The tach will now use the selected shift point, until set differently.
4. During normal tachometer operation, the shift light will come on when the tachometer reaches your set point. It will stay on until the engine speed drops below the set point.

**Note:** If the engine is running, the shift point can't be set.

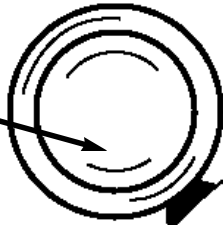
**Note:** The shift point setting can be checked anytime the vehicle is started. Turn the ignition on and the shift point setting will show on the dial.

**Note:** Any time power is applied to the tach, the Shift-Lite will light briefly to self-test the bulb.

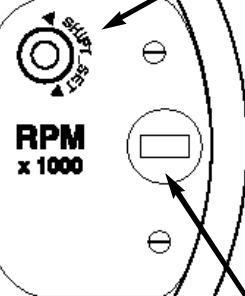
**WARNING**

Check with engine builder for maximum recommended safe shift point before setting shift point on tachometer. Failure to do this could lead to over-revving of engine, causing serious damage to engine and car.

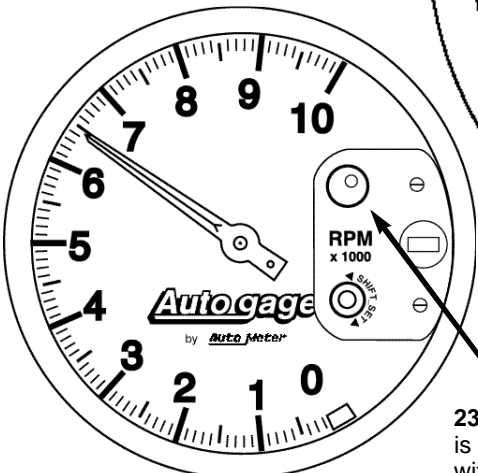
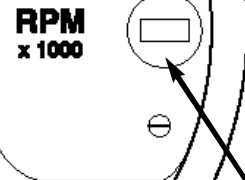
**Shift-lite:** For shift-lite bulb replacement, remove three screws on light. The bulb, located in the rear section, is easily removed by pushing and rotating it counter-clockwise. Replace with #1076 automotive bulb.



**Shift-Set:** To dial-in your desired shift-point turn the Shift-Set knob with power on. (See above for complete details.)

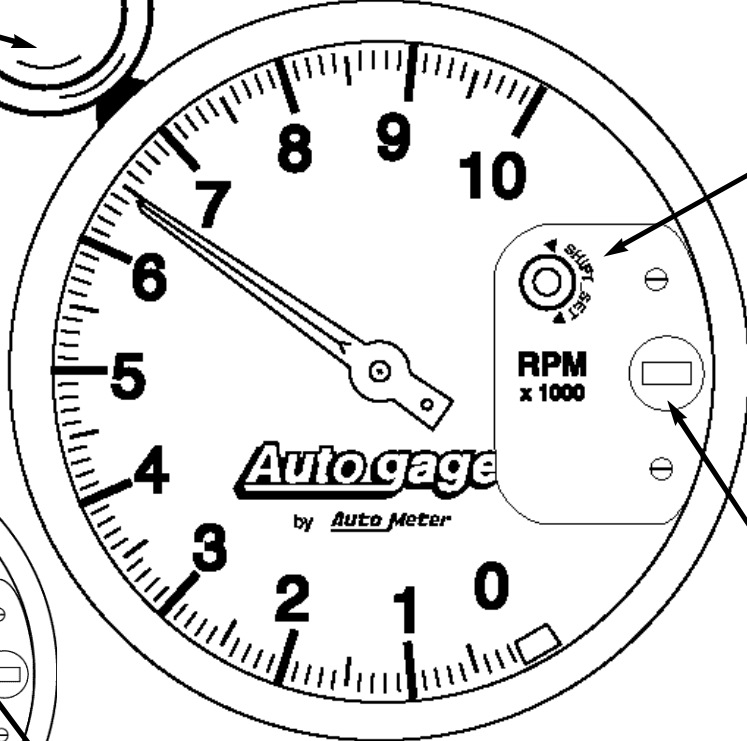


**Dial light:** For wedge base bulb replacement, order Auto Meter 3219 or GE 86 bulb. Turn socket 1/8 turn counter-clockwise to remove.



Model 233903

**233903 Shift-lite:** The Shift-Lite on model 233903 is located on the dial face. The Shift-Lite is set with the Shift Set button as described above.



Model 233904 Shown Here

## Autogage SERVICE

For service send your product to Auto Meter in a well packed shipping carton. Please include a note explaining what the problem is along with your phone number. Please specify when you need the product back. If you are sending product back for Warranty adjustment, you must include a copy (or original) of your sales receipt from the place of purchase.

### 12 MONTH LIMITED WARRANTY

The manufacturer warrants to the consumer that this product will be free from defects in materials and workmanship for a period of twelve (12) months from the date of the original purchase. Products that fail within this 12 month warranty period will be repaired or replaced at the manufacturer's option to the consumer, when determined by the manufacturer that the product failed because of defects in material or workmanship. This warranty is limited to the repair or replacement of parts in the instrument and the necessary labor done by the manufacturer to affect the repair or replacement of the instrument. In no event shall this warranty exceed the original purchase price of the instrument, nor shall the manufacturer be responsible for special, incidental or consequential damages or costs incurred due to failure of this product. Warranty claims to the manufacturer must be transportation prepaid and accompanied with dated proof of purchase. This warranty applies only to the original purchaser of product and is non-transferable. All implied warranties shall be limited in duration to the said 12 month warranty period. Breaking the meter seal, improper use or installation, accident, water damage, abuse, unauthorized repairs or alterations voids this warranty. The manufacturer disclaims any liability for consequential damages due to breach of any written or implied warranty on all products made by the manufacturer.

FOR SERVICE SEND TO: **AUTO METER PRODUCTS, INC.** 413 W. Elm St., Sycamore, IL 60178 USA (815) 895-8141

Email us at [service@autometer.com](mailto:service@autometer.com)