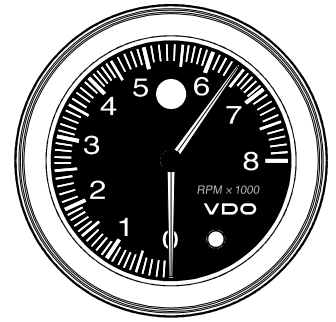


Performance Shift Light Tachometer Performance Tachometer

Installation and Operation Instructions

VDO Instruments

Winchester, Virginia USA



THE INSTRUCTIONS FOR INSTALLATION AND ELECTRICAL WIRING FOR THESE TACHOMETERS FOLLOW. USE IS RESTRICTED TO 12 VOLT NEGATIVE GROUND ELECTRICAL SYSTEMS.

Parts List

Item	Description	Quantity
1.	Tachometer	1
2.	Decals, 2" x 4" (not contingency decals)	2
3.	Green Lamp Cover	2
4.	Red Lamp Cover	2

Tachometer Installation

1. Cylinder Selection

Your tachometer is factory programmed for an eight cylinder engine. For other applications the selector switches must be set according to **Diagram A**.

- Remove the 3 Philips head screws from the rear cover.
- Remove the rear cover.
- Find your application in **Diagram A** and set the switches accordingly.
- Replace the rear cover and three screws.
DO NOT OVERTIGHTEN!

CAUTION: Read these instructions thoroughly before making installation. Always wear safety glasses, and always disconnect the battery ground before making any electrical connections. If in doubt, please contact your dealer or VDO Instruments at (540) 665-2428.

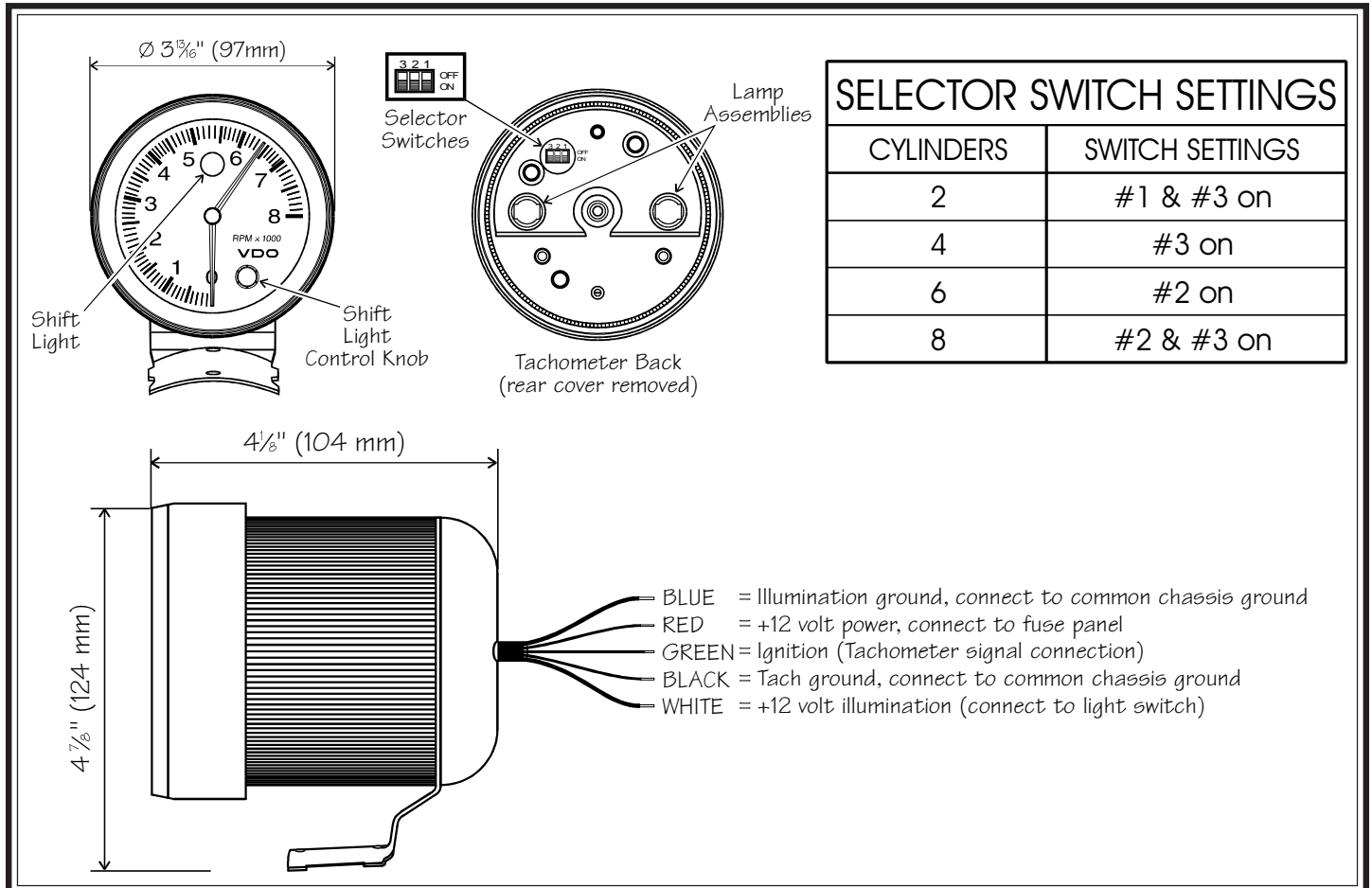


Diagram A

Dimensions, Selector Switch Settings and Wiring Chart

2. Colored Illumination

You may use the colored lamp covers to customize your tachometer's illumination.

- Remove the 3 Phillips head screws from the rear cover.
- Remove the rear cover.
- Using long nose pliers, gently grip one of the lamp assemblies and give it about a quarter-turn counter-clockwise.
- Lift the lamp assembly straight out.
- Slide the colored lamp cover of your choice over the bulb section of the lamp assembly.
- Reinsert the lamp assembly, and lock it into position with about a quarter-turn clockwise.
- Repeat this procedure for the second lamp assembly.
- Replace the rear cover and the three screws.
DO NOT OVERTIGHTEN!

3. Mounting the Tachometer

Determine the mounting position for your Tachometer that is best for you. The mounting bracket may be bent to adjust the viewing angle of your Tachometer's face.

- Recommended installation is on the steering column using a band clamp (available at a local auto parts store).
- Dash mounting uses the two holes provided in the base of the mounting bracket to secure the tachometer to the dash.

4. Wiring the Tachometer

- Turn off the ignition and disconnect the negative terminal from the battery post if you haven't already done so.
- Wire the tachometer to the vehicle as shown in **Diagram A**.

** Refer to your vehicle's owner/service manual or the aftermarket ignition manufacturer's instructions for the recommended place to tap the signal. Typical examples are shown in the table at upper right.

- Reconnect the battery and start your vehicle to test.

IGNITION	TYPE	CONNECTIONS
Standard	points/breakerless	negative terminal on coil
CD	points	points connection to CD box
	breakerless	positive terminal on coil
Electronic	MSD, ACCEL, MALLORY, DDIS (distributorless), etc.	Tach output terminal on ignition box, or points connection to ignition box, or negative coil

5. Shift Light Operation (Performance Shift Light Tachometers Only)

The RED Shift Light on your Tachometer's face (refer to Diagram A) will light up whenever your engine is running at or above your pre-set Shift Point RPM.

1. Setting the Shift Point:

- Turn ON the ignition. The engine MAY be running.
- Push in the Shift Light Control Knob (Diagram A).
- The RED Shift Light will turn on and the tachometer pointer will show the current Shift Point RPM.
- While holding in the Control Knob, slowly turn it until the tachometer pointer indicates your desired Shift Point RPM.
- Release the Control Knob. The Shift Light will turn OFF and your Shift Point RPM is set.

2. Checking the Shift Point:

You can quickly check your Shift Point RPM at any time, even while the engine is RUNNING:

- Turn ON the ignition. The engine MAY be running.
- Push in the Shift Light Control Knob.
- The RED Shift Light will turn on and the tachometer pointer will show the current Shift Point RPM.

VDO Limited Warranty

VDO North America, LLC. warrants all merchandise against defects in factory workmanship and materials for a period of 24 months after purchase. This warranty applies to the first retail purchaser and covers only those products exposed to normal use or service. Provisions of this warranty shall not apply to a VDO product used for a purpose for which it is not designed, or which has been altered in any way that would be detrimental to the performance or life of the product, or misapplication, misuse, negligence or accident. On any part or product found to be defective after examination by VDO North America, VDO North America will only

repair or replace the merchandise through the original selling dealer or on a direct basis. VDO North America assumes no responsibility for diagnosis, removal and/or installation labor, loss of vehicle use, loss of time, inconvenience or any other consequential expenses. The warranties herein are in lieu of any other expressed or implied warranties, including any implied warranty of merchantability or fitness, and any other obligation on the part of VDO North America, or selling dealer. (NOTE: This is a "Limited Warranty" as defined by the Magnuson-Moss Warranty Act of 1975.)